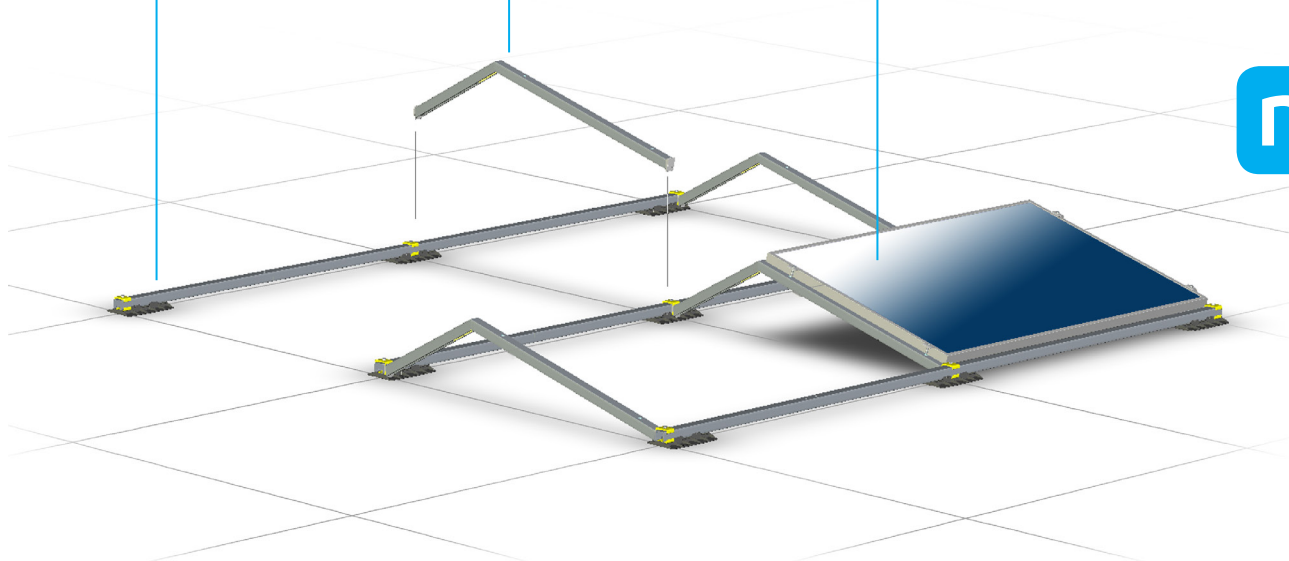


SUNBEAM offers a completely new approach to mounting PV modules on flat rooftops. Its smart and simple system design ensures ultra-fast installation times at a highly competitive price. Installing SUNBEAM is as easy as one-two-three!

- 1 Place base profiles
- 2 Place and fix carriers
- 3 Place and fix modules



SUNBEAM basically consists of only two parts: base profiles and carriers. The feet, mounting bolts and fixing elements are factory pre-assembled. No measuring on the roof, no sawing or cutting, the installation of SUNBEAM is a breeze. It's also a very strong system with a unique stiff matrix structure which evens out the wind loads and minimises the mechanical strain on the modules.



Ultra-fast installation

SUNBEAM will be shipped to your location with the exact right dimensions and quantities for your project. On the roof, all the installer needs to do is click the system together and tighten the bolts.

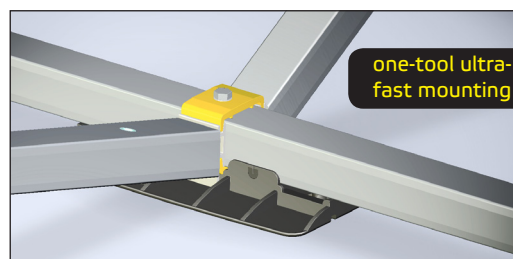
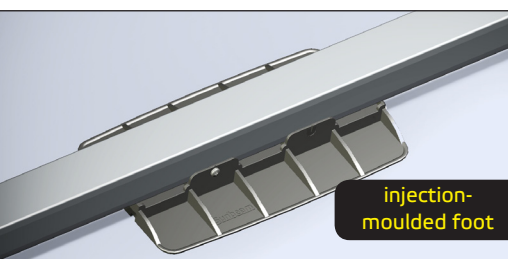
Flexible

SUNBEAM is suited for any size, brand or make of solar module, from mini-kit to MWp power plant. The module angle and inter-row distance may be varied to meet local conditions or client requirements.

Lightweight

SUNBEAM's innovative, patented, wind tunnel tested design reduces the sensitivity to wind forces, making it an aerodynamic and lightweight system. In many situations, no additional ballast is required.

www.sunbeam-pv.com



Wind and ballast

With SUNBEAM, we have developed a method to combine our own wind tunnel test results with the wind load guidelines from Eurocode 1. The result is a straightforward, standardised and reliable method of calculating specific roof loads for various locations, building heights and roof sizes. With each quotation we will provide a roof load estimation in kg/m². When installed according to our specifications, we will provide a full 10 year warranty on the system.



for enquiries, please contact
info@sunbeam-pv.com
+31 30 43 00 333

SUNBEAM is available in two versions: Sunbeam Universal and Sunbeam Fit. The main difference is that Sunbeam Universal can be delivered from stock, whereas Sunbeam Fit will be made to order, project-specific. Pricing will, for both versions, depend on order size and project layout.

	SUNBEAM Universal	SUNBEAM Fit
module type	60-cell crystalline framed modules	any type, any size
module angle	15 degrees	any angle between 10 and 20 degrees
shading angle	25 degrees	any angle between 10 and 35 degrees
module orientation	south	south or east-west (symmetrical)
row pitch	1500 mm	1400, 1500, 1600, 1700 or 1800 mm
logistics	delivered from stock	made to order

Common features	
materials	aluminium, stainless steel, UV resistant plastic feet (HDPE)
fit for roofing material	foil (EPDM, PVC etc.) or bituminous covered steel or concrete roofs
max. roof inclination	4 degrees
max. snow loads	1200 N/m ² for standard versions, 2400 N/m ² with additional measures
max. wind loads	according to Eurocode, depending on ballast and/or optional wind deflection plates
warranty	10 years

The team behind Sunbeam

Sunbeam has been developed by two ambitious entrepreneurs who have a vast experience with solar PV mounting systems.



Marco Jansen
 m.jansen@sunbeam-pv.com
 +31 6 1966 1502



Peter Wieriks
 p.wieriks@sunbeam-pv.com
 +31 6 1942 7142

Company contact information

Address	E-mail
Sunbeam BV	info@sunbeam-pv.com
Padualaan 8	
3584 CH Utrecht	Phone
the Netherlands	+31 30 43 00 333

www.sunbeam-pv.com

'Sunbeam' is a registered trademark.

The Sunbeam concept and design are protected by two patent applications.